

Standard interior scheme as used by leading boat builders. Extended primer and topcoat overcoating times gives more flexibility to your interior painting schedule.

Benefits

- Scheme and products have an extensive track record within major boat building companies
- Epoxy GP Coating has excellent adhesion to the majority of substrates currently used in the Yacht industry – a truly universal primer
- Long overcoating window (12 months) for Epoxy GP Coating gives added flexibility in painting schedules – freedom to alter dramatically alter schedules if required
- UC Gloss is a two-pack polyurethane coating with excellent flow-out characteristics - gives a durable, chemical resistant[#] easy clean surface
- Scheme is Surface Spread of Flame & Smoke and Toxicity certified – can be used in engine rooms and is available in several RAL shades to match equipment

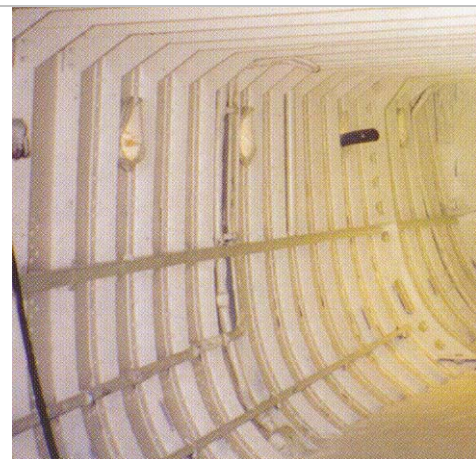


[#] chemically resistant to normal engine room fluids for up to 7 days

Typical Scheme

- | | | |
|----|------------------|-------------|
| 1. | Epoxy GP Coating | 100 microns |
| 2. | UC Gloss | 40 microns |



Note:- Above figures given as an example of a typical scheme only



Substrates

- Aluminium
- Steel

Product attributes*

Product	Benefits	Spreading rates
1. Epoxy GP Coating 	<ul style="list-style-type: none"> Extended overcoating primer (up to 12 months, self-on-self or topcoats) Applied by airless spray, brush, roller and conventional spray 	3.4m ² /L
2. UC Gloss 	<ul style="list-style-type: none"> Polyurethane technology Easily sanded Excellent flow-out characteristics Durable Chemical resistant[#] Easy clean surface Applied by brush, roller or conventional spray 	9.6m ² /L


* Further information for the application of this product can be found on the relevant datasheet

[#] chemically resistant to normal engine room fluids for up to 7 days

The following assumptions have been made:-

- 1) No thinners volumes (as necessary for application purposes) have been included
- 2) Epoxy GP spreading rates based on airless spray application
- 3) Undercoat Gloss spreading rates based on conventional spray application

We have taken reasonable care in preparing this document and in collecting and preparing material for inclusion in it but do not represent or warrant that it is free from error or that the information content is complete or accurate. The statements and recommendations are advisory only and all advice and products are provided on the terms set out in our standard Conditions of Sale.

Akzo Nobel Logo, , International®, and other products mentioned in this document are trademarks of or licensed to Akzo Nobel. © Akzo Nobel 2005